

SMS software for GSM Linkgate



SMS Server



User Manual v1.0 rev 1.0

Table des Matières

1. Présentation	3
2. Connections	3
3. How does it work	3
4. Installation and configuration of SMS MAIL	3
5. Start Mail server	5
6. Setup a mail client	5
7. Send and receive SMS	5

1. Présentation

You can use the gateway in order to send and receive SMS through a PC equipped with the SMS Server software.

You can send and receive SMS through the Gateway without licence, but all the send and received mail will be limited to 10 characters with a demo text

SMS Mail acts as a standard POP Server, so you can easily implement the SMS solution into your computer network.



Attention: Not compatible With Outlook Exchange

2. Connections



Connexion à la passerelle



Connexion au PC

3. How does it work :

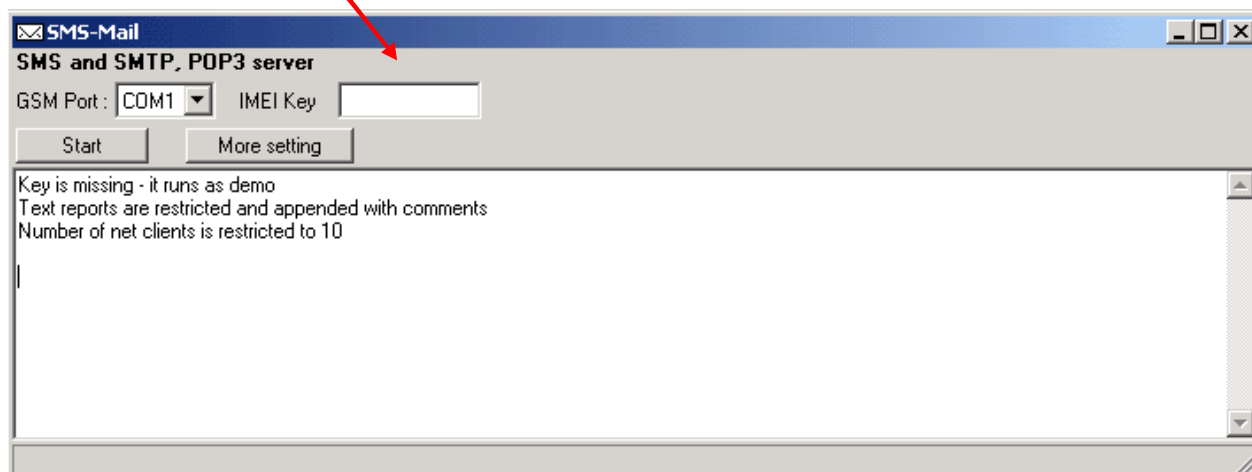
Like a classical POP server, you can create users (using aliases), in order to have a single Sim card but several accounts.

4. Installation and configuration of SMS MAIL

You can install a copy of SMS Mail on a computer equipped with Microsoft Windows. Insert the Linkgate Disc in the PC. A window will show (html page) click on « SMS Server » and save the file on your hard drive (wherever you want).

If you have purchased a licence, please insert it in the IMEI Key field

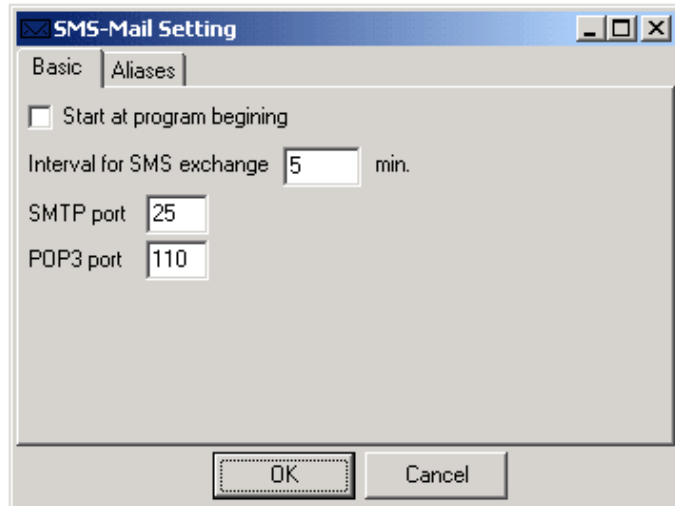
SMS licence key in the zone: **'IMEI key'**



You can only use one key per GSM module (the licence key is associated to the IMEI of the gsm module)

You need to reboot the software in order to fully use SMS MAIL. If you want to start SMS Mail with Windows, check 'Start at program beginning' in 'more settings' options.

In order to use the memory of the computer instead of the SIM card, you have to define a synchronisation period in order to send/receive the SMS. During this send/receive time the gateway changes his state into DATA mode, so you are not able to call during a synchronisation. You can also configure the incoming and outgoing port of the SMS Mail software (default: 25 and 110).

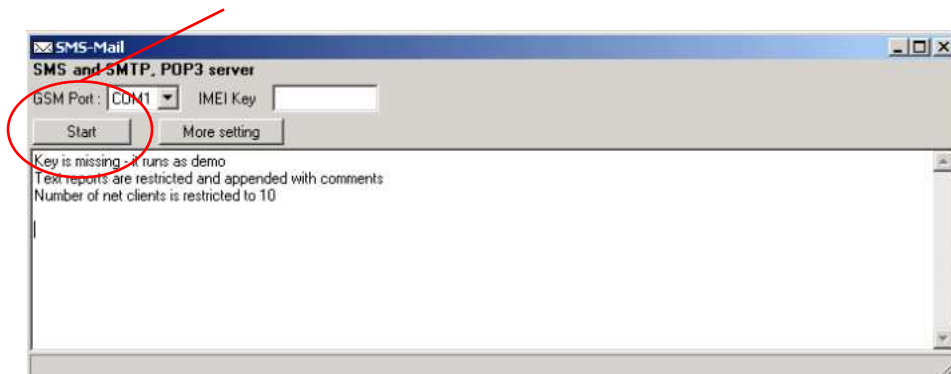


Click on 'Start at program beginning'

You can define the interval of sends and reception of the SMS. Those contrary to the majority of telephones GSM are not stored on SIM card but placed in the waiter (in order not to have problems of saturation memory). At the time of the reception and the transmission of SMS, Link Gate be in DATA mode, it is thus not possible to pass from communication during this time. If your waiter uses already ports 25 and 110, you can redefine the ports in order not to return in conflict with an already existing application.

5. Start Mail server

Push 'start':



6. Setup a mail client

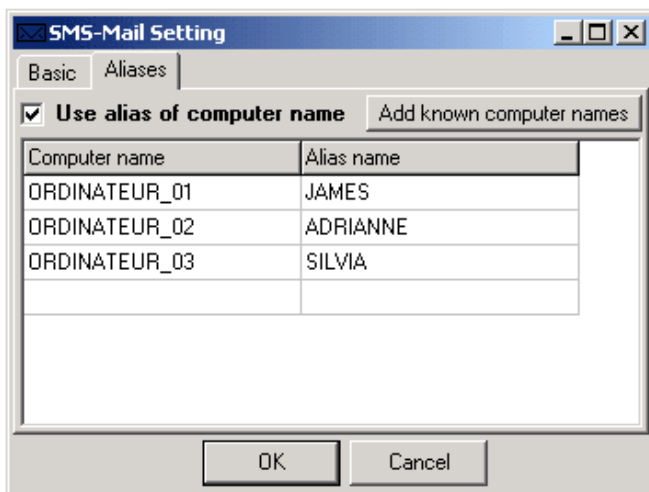
Here are the settings of SMS MAIL:

POP: IP or name of the computer which is connected to the Linkgate

SMTP: IP or name of the computer which is connected to the Linkgate

Please make sure you are using the good communication ports.

7. Send and receive SMS :



If you want to correctly distribute the received SMS, you must respect the following rules:

-the SMS should contain the name of the computer

OR

-the alias of the computer name

In a received message the sender should write the name of the computer as follow :

#name_of_the_computer_or_alias# body of the SMS

You can send a SMS to multiple computers by separating the names with a coma:

#name01,name02,name03...# body of the SMS

If you want to send a SMS from your pop client, please use the following syntax:

SMS@XXXXXXXXXXXXX.sms , the X's represents the phone number of the receiver

After a mail synchronisation the SMS MAIL server will extract the phone from the address

SMS@XXXXXXXXXXXXX.sms and will send it through the GSM network.

www.linkcom.net

info@linkcom.net

Hot Line : 08 26 46 79 00 (France seulement)