



PROGRAM for recording OGM messages

# OGMrec



**Instalation and user guide v 1.0**

Program OGMrec is designed for recording OGM messages from PC to Link Gate ISDN gsm gateway.

Program supports saving messages from formats: wav, mp3, midi a r mi.

Configuration of gate: OGM module

Configuration of PC: systém Windows 98 and higher,  
sound card, RS 232 serial port

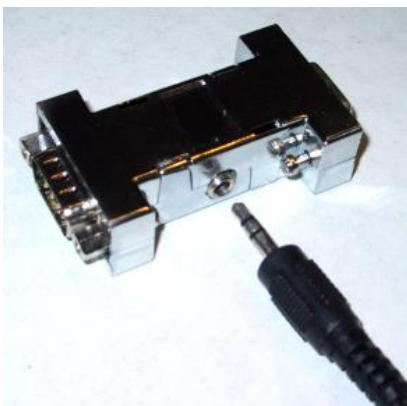
## Installation

Program cant be install. You can run it from various medium. For more comfortable work is suitable create adress OGMrec , where will be copyright file OGMrec.exe. Here is also suitable create adress OGM where programm prefferably search for OGM messages for recording.

*Note: while install from original enclosed CD it is done automatically !*

## Connection of PC with the GSM Gateway

- At choosen RS 232 serial port connect shipped convertor (via picture)
- Use „Jack to Jack“ cable for connection of convertor to sound card in your PC (best LINE OUT).
- Connect RS 232 serial cable from SET port of GSM gateay to Convertor (via. Link Gate Manuál).

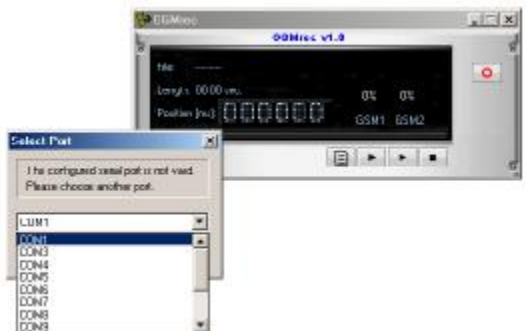


## Programm guide

1. Connect Gate to PC.
2. Switch ON the gate (when it is not already). OGM message is possible record immediatelly after switching ON ( it is not necessary wait for GSM net registration)
3. Run programm (OGMrec.exe).
4. After pushing button „List“ (Buttons have context help) choose via standard process file of message you want record. It is possible choose between file formats wav, mp3, midi a rmi.



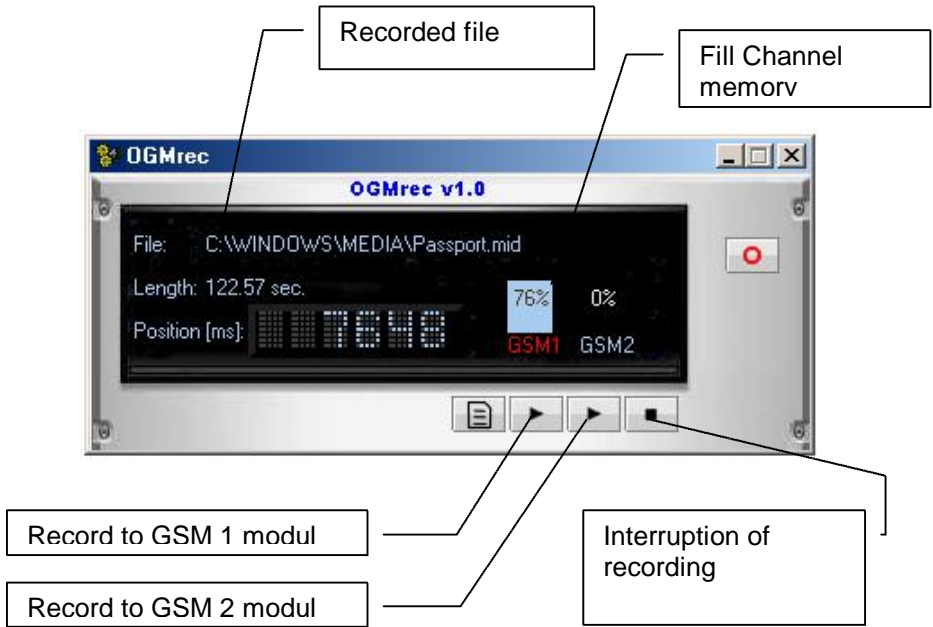
5. When is not already done choose serial port (com) for communication PC – Gateway.



6. In programm inform window appears chosen file and its lenght.



When file length is over 10 seconds (permitted length for record of each channel), will be record first 10 seconds. Afterwards the recording process will automatically cancel.



7. Run recording by button for channel GSM1 or channel GSM2 . In programm inform window is monitoring time of record and fill channel memory ( %).
8. When you want record different message for second channel , repeat since point 4. Anyhow from point 7.
9. Verify by call quality of recorded messages.

**Attention! It is very important test volume level on sound card. When is low the message will be low. When is too high afterwards the voice at message can be distorted.**